

# Agua-Tek Data Sheet

## The FCT - PTU test Kit

Flow Cable - Pulse Test unit now featuring - Flow rates & Volume



### ON SITE FLOW RATES & VOLUMES

The PTU can be used to check Flows & Flow Volumes / totals on site making it a handy leakage tool as well as a flow cable and pulse test unit.

Supplied in a small protective carry case. Small accessory splitters and manufacturers adaptors can be stored in the foam adjacent the PTU.

The FCT - PTU is housed in a blue rubberised protective sleeve.



**QUICK FIT TERMINALS** located at the top of the unit allow bare wire / rag tail connection to flow sensors and flow input digital cables

The red & black terminals above the wording Pulse are the connections outputting a pulse signal. The connections above Test Unit are inputs for flow signals



#### ONLY THREE BUTTONS

**.On/Off:-** Does exactly what it says

**Pulse/Sig:-** Switches between

0.5l, 1l, 5l, 10l, 100l per pulse

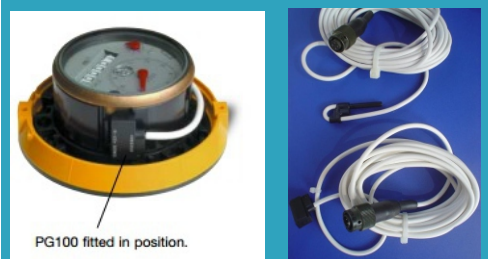
**Tot/Flow:-** Switches between Flow rate & Totals



#### FITTED WITH HALMA AND TECHNOLOG

This allows quick connection to water meters on site fitted with data logger manufacturers plugs to test flows and inputs to loggers.

### The PTU will test all the sensors below



PG100 fitted in position.

**Agua-Tek Limited**  
 unit 13 – Lime Tree Business Park-Matlock – Derbyshire – DE4 3EJ -  
 Tel: 01629 343013  
 Andrew Allen Mob: 07581 358850 Email: [andrew.allen@agua-tek.co.uk](mailto:andrew.allen@agua-tek.co.uk)  
 Email: [Sales@agua-tek.co.uk](mailto:Sales@agua-tek.co.uk) Web: [www.agua-tek.co.uk](http://www.agua-tek.co.uk)